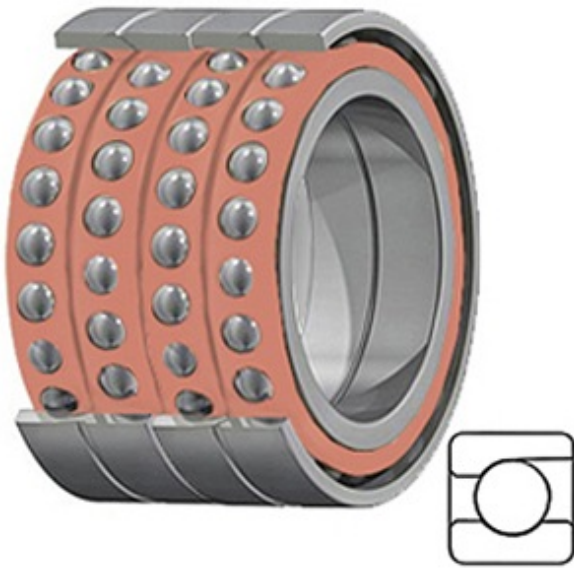




FUYR BEARING CO.,LTD.



2MM9340WI QUH Bearing 2D drawings and 3D CAD models

7.874 Inch | 200 Millimeter x 11.024 Inch | 280 Millimeter x 5.984 Inch | 152 Millimeter TIMKEN 2MM9340WI QUH Precision Ball Bearings

Bearing No. 2MM9340WI QUH

Category	Precision Ball Bearings
Inventory	0.0
Manufacturer Name	TIMKEN
Minimum Buy Quantity	N/A
Weight	25.04
EAN	0087796328235
Product Group	B04270
Enclosure	Open
Precision Class	ABEC 7 ISO P4
Material - Ball	Steel
Number of Bearings	4 (1 Quadruplex Set)
Contact Angle	15 Degree
Preload	Heavy
Raceway Style	1 Rib Outer Ring
Cage Material	Phenolic
Rolling Element	Ball Bearing
Mounting Arrangement	Quadruplex-Universal
Flush Ground	Yes
Inch - Metric	Metric
Other Features	Single Row Angular Contact Super High Precision
Long Description	200MM Bore; 280MM Outside Diameter; 152MM Width; Open Enclosure; ABEC 7 ISO P4 Precision;



FUYR BEARING CO.,LTD.

	Steel Ball Material; 4 (1 Quadruplex Set) Bearings; 15 Degree Contact Angle; Phenolic Cage Material; 1 Rib O
Category	Precision Ball Bearings
UNSPSC	31171531
Harmonized Tariff Code	8482.10.50.28
Noun	Bearing
Keyword String	Angular Contact Ball
Manufacturer URL	http://www.timken.com
Manufacturer Item Number	2MM9340WI QUH
Weight / LBS	55.16
d	7.874 Inch 200 Millimeter
D	11.024 Inch 280 Millimeter
B	5.984 Inch 152 Millimeter