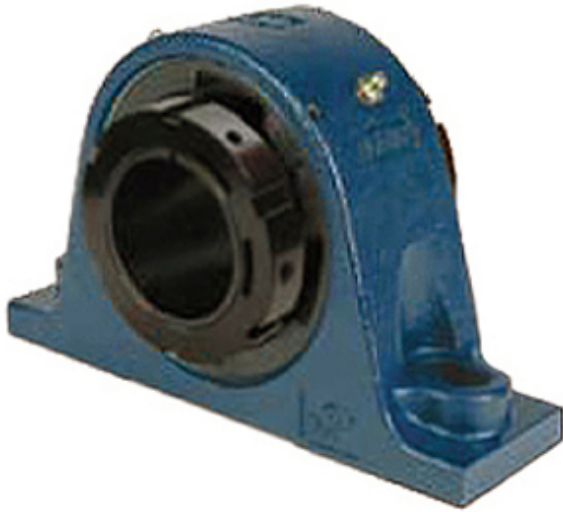




# FUYR BEARING CO.,LTD.



3.5 Inch | 88.9 Millimeter x 3.82 Inch | 97.028 Millimeter x 4.409 Inch | 112 Millimeter QM INDUSTRIES TAPN20K308SEM Pillow Block Bearings

Bearing No. TAPN20K308SEM

TAPN20K308SEM Bearing 2D drawings and 3D CAD models

Category	Pillow Block Bearings
Inventory	0.0
Manufacturer Name	TIMKEN
Minimum Buy Quantity	N/A
Weight	24.97
EAN	0883450197571
Product Group	M06288
Number of Mounting Holes	2
Mounting Method	Tapered Adapter Sleeve
Housing Style	2 Bolt Pillow Block
Rolling Element	Spherical Roller Bearing
Housing Material	Cast Steel
Expansion / Non-expansion	Expansion
Mounting Bolts	7/8 Inch
Relubricatable	Yes
Insert Part Number	22220
Seals	Triple Lip Nitrile Rubber
Housing Configuration	1 Piece Solid
Inch - Metric	Inch
Other Features	Double Row   Extreme Duty   SN Style
Long Description	2 Bolt Pillow Block; 3-1/2" Bore; 4.409" Base to Center Height; Tapered Adapter Sleeve Mount; Spherical



## FUYR BEARING CO.,LTD.

	Roller Bearing; 10-7/8" Minimum Bolt Spacing; 12-7/8" Bolt Spacing Maximum;
Category	Pillow Block
UNSPSC	31171511
Harmonized Tariff Code	8483.20.40.80
Noun	Bearing
Keyword String	Pillow Block
Manufacturer URL	<a href="http://www.qmbearings.com">http://www.qmbearings.com</a>
Manufacturer Item Number	TAPN20K308SEM
Weight / LBS	65
Actual Bolt Center to Center	0 Inch   0Millimeter
d	3.5 Inch   88.9 Millimeter
Bolt Spacing Minimum	10.875 Inch   276.225Millimeter
Bolt Spacing Maximum	12.875 Inch   327.025Millimeter
Nominal Bolt Center to Center	11.9 Inch   302.3 Millimeter
D	3.82 Inch   97.028 Millimeter
B	4.409 Inch   112 Millimeter