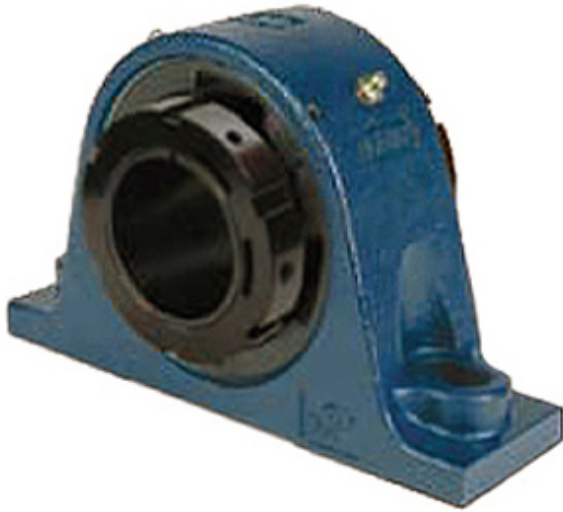




# FUYR BEARING CO.,LTD.



3.438 Inch | 87.325 Millimeter x 4.63 Inch |  
 117.602 Millimeter x 3.75 Inch | 95.25 Millimeter  
 QM INDUSTRIES QVVP19V307SB Pillow Block  
 Bearings

Bearing No. QVVP19V307SB

QVVP19V307SB Bearing 2D drawings and 3D CAD models

|                           |  |
|---------------------------|--|
| Category                  | Pillow Block Bearings  |
| Inventory                 | 0.0  |
| Manufacturer Name         | TIMKEN   |
| Minimum Buy Quantity      | N/A  |
| Weight                    | 17.706   |
| EAN                       | 0883450171045  |
| Product Group             | M06288   |
| Number of Mounting Holes  | 2  |
| Mounting Method           | V Lock   |
| Housing Style             | 2 Bolt Pillow Block  |
| Rolling Element           | Spherical Roller Bearing   |
| Housing Material          | Cast Steel   |
| Expansion / Non-expansion | Non-expansion  |
| Mounting Bolts            | 7/8 Inch   |
| Relubricatable            | Yes  |
| Insert Part Number        | 22219  |
| Seals                     | Double Lip Nitrile Rubber  |
| Housing Configuration     | 1 Piece Solid  |
| Inch - Metric             | Inch   |
| Other Features            | Double Row   Double Nut  |
| Long Description          | 2 Bolt Pillow Block; 3-7/16" Bore; 3-3/4" Base to Center Height; V Lock Mount; Spherical Roller Bearing; 9-3/8" Minimum Bolt |



## FUYR BEARING CO.,LTD.

|                               |   |
|-------------------------------|---|
|                               | Spacing; 11-1/4" Bolt<br>Spacing Maximum;<br>Relubricatable;      |
| Category                      | Pillow Block  |
| UNSPSC                        | 31171511  |
| Harmonized Tariff Code        | 8483.20.40.80   |
| Noun                          | Bearing   |
| Keyword String                | Pillow Block  |
| Manufacturer URL              | <a href="http://www.qmbearings.com">http://www.qmbearings.com</a> |
| Manufacturer Item Number      | QVVP19V307SB  |
| Weight / LBS                  | 45  |
| Actual Bolt Center to Center  | 0 Inch   0Millimeter  |
| Bolt Spacing Maximum          | 11.25 Inch  <br>285.75Millimeter                                  |
| d                             | 3.438 Inch   87.325<br>Millimeter                                 |
| B                             | 3.75 Inch   95.25 Millimeter                                      |
| Nominal Bolt Center to Center | 10.3 Inch   260.5 Millimeter                                      |
| Bolt Spacing Minimum          | 9.375 Inch  <br>238.125Millimeter                                 |
| D                             | 4.63 Inch   117.602<br>Millimeter                                 |