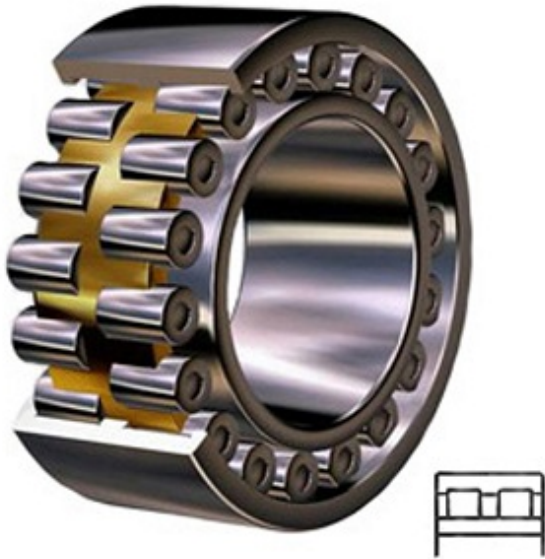




FUYR BEARING CO.,LTD.



5.512 Inch | 140 Millimeter x 7.48 Inch | 190
 Millimeter x 1.969 Inch | 50 Millimeter
CONSOLIDATED BEARING NNU-4928-KMS
P/5 Cylindrical Roller Bearings

Bearing No. NNU-4928-KMS P/5

NNU-4928-KMS P/5 Bearing 2D drawings and 3D CAD models

Category	Cylindrical Roller Bearings
Inventory	0.0
Manufacturer Name	CONSOLIDATED BEARING
Minimum Buy Quantity	N/A
Weight	3.9
EAN	0644075077439
Product Group	B04144
Bore Profile	Tapered
Cage Material	Bronze
Precision Class	RBEC 5 ISO P5
Number of Rows of Rollers	Double Row
Separable	Inner Ring - Both Sides
Rolling Element	Cylindrical Roller Bearing
Profile	Complete with Outer and Inner Ring
Snap Ring	No
Internal Clearance	C0-Medium
Retainer	Yes
Relubricatable	Yes
Inch - Metric	Metric
Other Features	Plain Inner Ring 3 Rib Outer Ring Cage on Outer Ring ID
Long Description	140MM Bore; Tapered Bore



FUYR BEARING CO.,LTD.

	Profile; 190MM Outside Diameter; 50MM Width; Bronze Cage Material; RBEC 5 ISO P5; Double Row; Inner Ring - Both Sides Separable; No Snap Ring; Relubricatable; C0-Medium Int
Category	Cylindrical Roller Bearing
UNSPSC	31171547
Harmonized Tariff Code	8482.50.00.00
Noun	Bearing
Manufacturer URL	http://www.consbrgs.com
Manufacturer Item Number	NNU-4928-KMS P/5
Weight / LBS	8.598
d	5.512 Inch 140 Millimeter
D	7.48 Inch 190 Millimeter
B	1.969 Inch 50 Millimeter